



YAMAHA

ALL-STAR BAND

Audition Process

Most important - Sound, Pitch and Time!

Regarding the Big Band Excerpts, please listen to the supplied recordings to help understand the style and context. The tempo markings of the excerpts are guides only (they notate the tempo of the recording). It is suggested that you perform the excerpts at a tempo that is comfortable for you to demonstrate your best sound, pitch and sense of time. **These are more important than the tempo.**

Trombone

1. Big Band Excerpt(s) All Trombones (including Lead and Bass) = Slow Grind
Optional Lead Trombone = Blue Daniel
Optional Bass Trombone = Shuffle Boogie Swamp Groove Blues

Trombone Players auditioning for Lead Trombone need to play both "Slow Grind" and "Blue Daniel".

Trombone Players auditioning for Bass Trombone need to play both "Slow Grind" and "Shuffle Boogie Swamp Groove Blues".
2. Scales Please note Separate Scale Sheets for Tenor and Bass Trombones
Please note Tempo Markings



YAMAHA

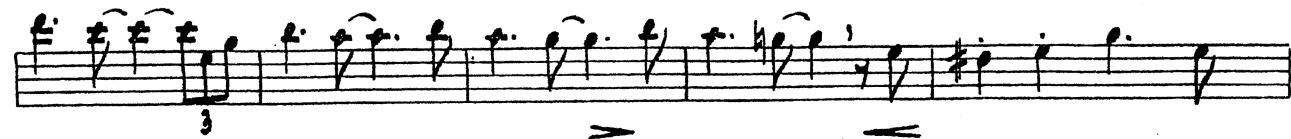
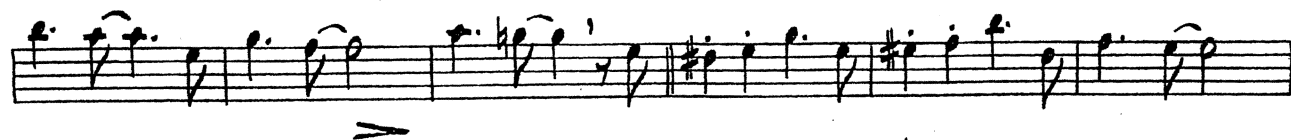
All Star Band

Trombone Audition – Big Band Excerpt
"Slow Grind" arr. Rob McConnell

$\text{♩} = 76$
Swing feel

Soli

A





All Star Band

Lead Trombone Audition – Big Band Excerpt "Blue Daniel" arr. Rob McConnell

$\text{♩} = 140$ swing feel

Handwritten musical score for Lead Trombone Audition. The score is written on five staves in bass clef with a key signature of one flat (Bb). The tempo is marked as $\text{♩} = 140$ with a "swing feel".

The score includes the following measures and annotations:

- Measure 109: Circled measure number, marked "SOLO-LEAD".
- Measures 110-114: First staff, containing measures 110, 111, 112, 113, and 114.
- Measures 115-118: Second staff, containing measures 115, 116, 117, and 118.
- Measures 119-122: Third staff, containing measures 119, 120, 121, and 122.
- Measures 123: Fourth staff, containing measure 123.

Measure numbers 109, 110, 111, 112, 113, 114, 115, 116, 117, 118, 119, 120, 121, 122, and 123 are written below the staves. The notation includes various rhythmic values, slurs, and articulation marks.

